

# **Post Renal Transplant Care: Back to the community**

**Dr Sandawana William Majoni**

**On behalf of NT Top End Transplant  
Services**

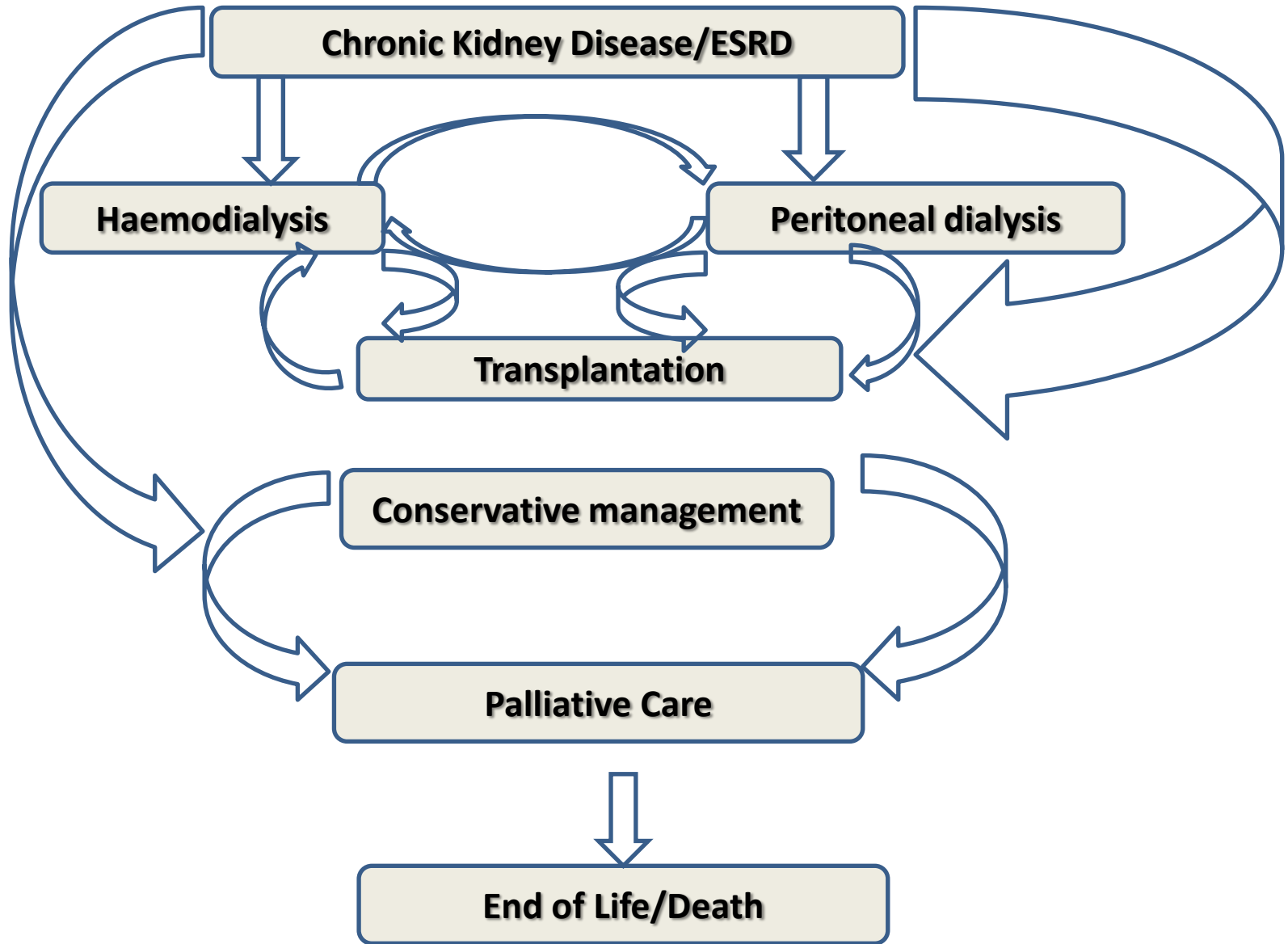
# OUTLINE

- The challenges of renal transplant patient follow up in the communities
- Evolving processes
- Anticipated results

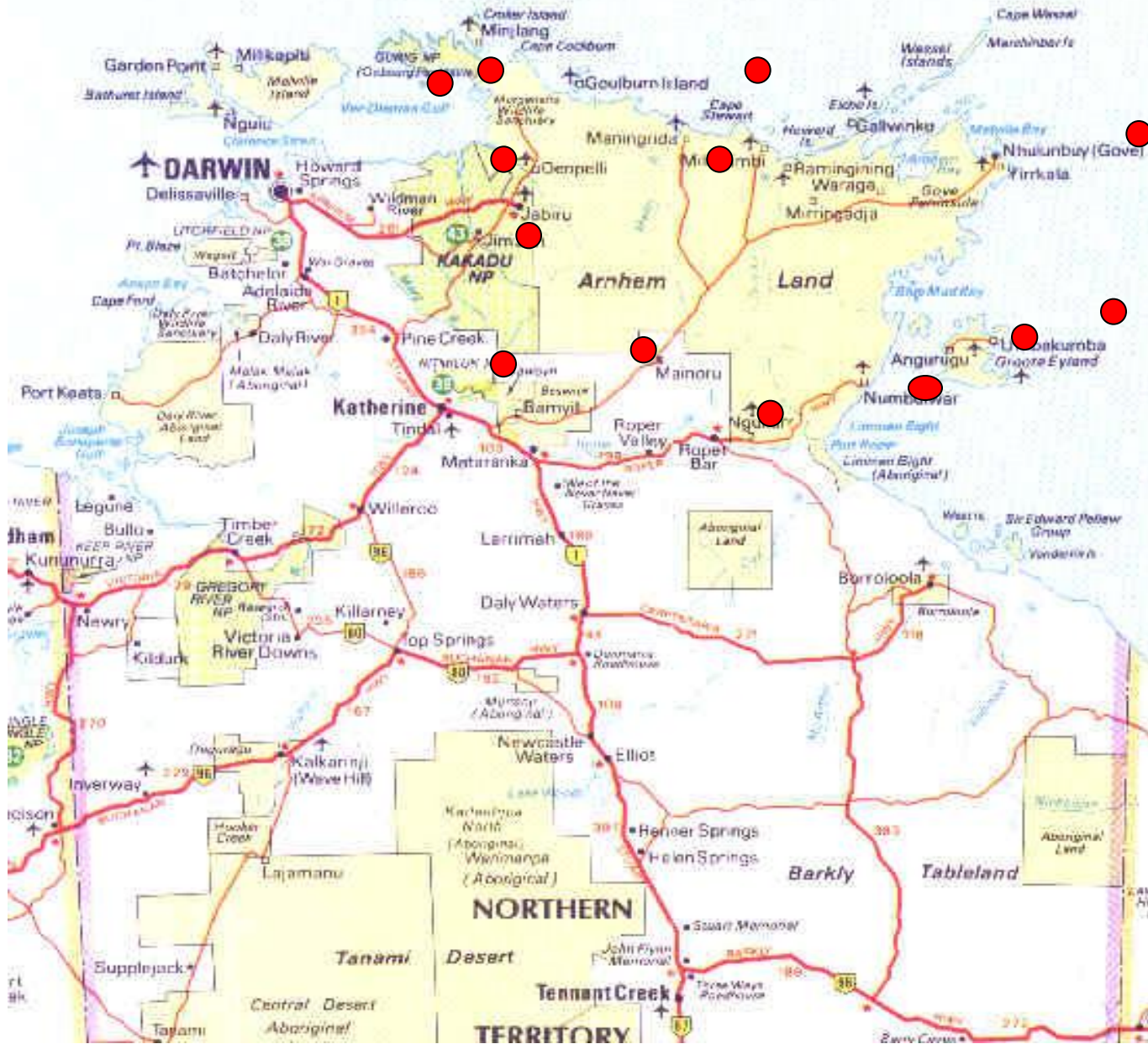
# THE CHALLENGES

- Remoteness
- High staff turnover
- Perceptions about renal transplantation as an option for RRT in Indigenous patients
- Social issues
- Managing immunosuppression
- Managing acute problems in transplant patients

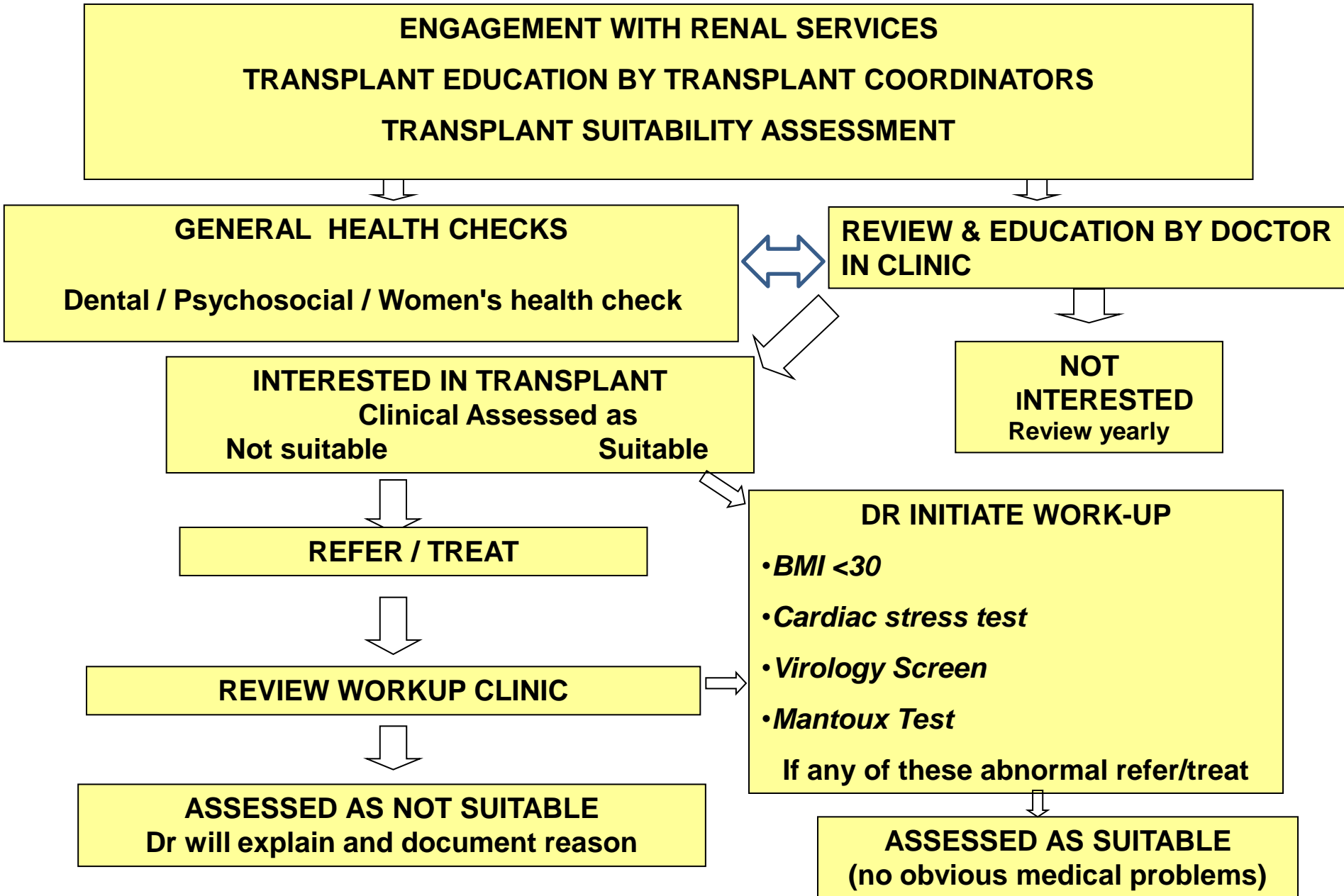
# INTEGRATED CARE SYSTEM FOR ESRD



# TRANSPLANT PATIENT LOCATION



# PATHWAY TO TRANSPLANT



# PATHWAY TO TRANSPLANT

DOCTOR REFERS IN WRITING TO TRANSPLANT COORDINATOR

FURTHER EDUCATION WITH TRANSPLANT NURSE

CONTINUE WORK UP

- \* Echo/ECG
- \* Chest X-Ray
- \* Bloods
- \* Pulmonary Function test
- \* Bone Density Scan

REVIEW BY ADELAIDE TRANSPLANT TEAM

APPROVED FOR ACTIVE  
TRANSPLANT LIST

NEED FURTHER TESTS  
(Review when complete)

WAIT FOR TRANSPLANT  
IN DARWIN OR IN THE COMMUNITY

TRANSPLANT IN ADELAIDE

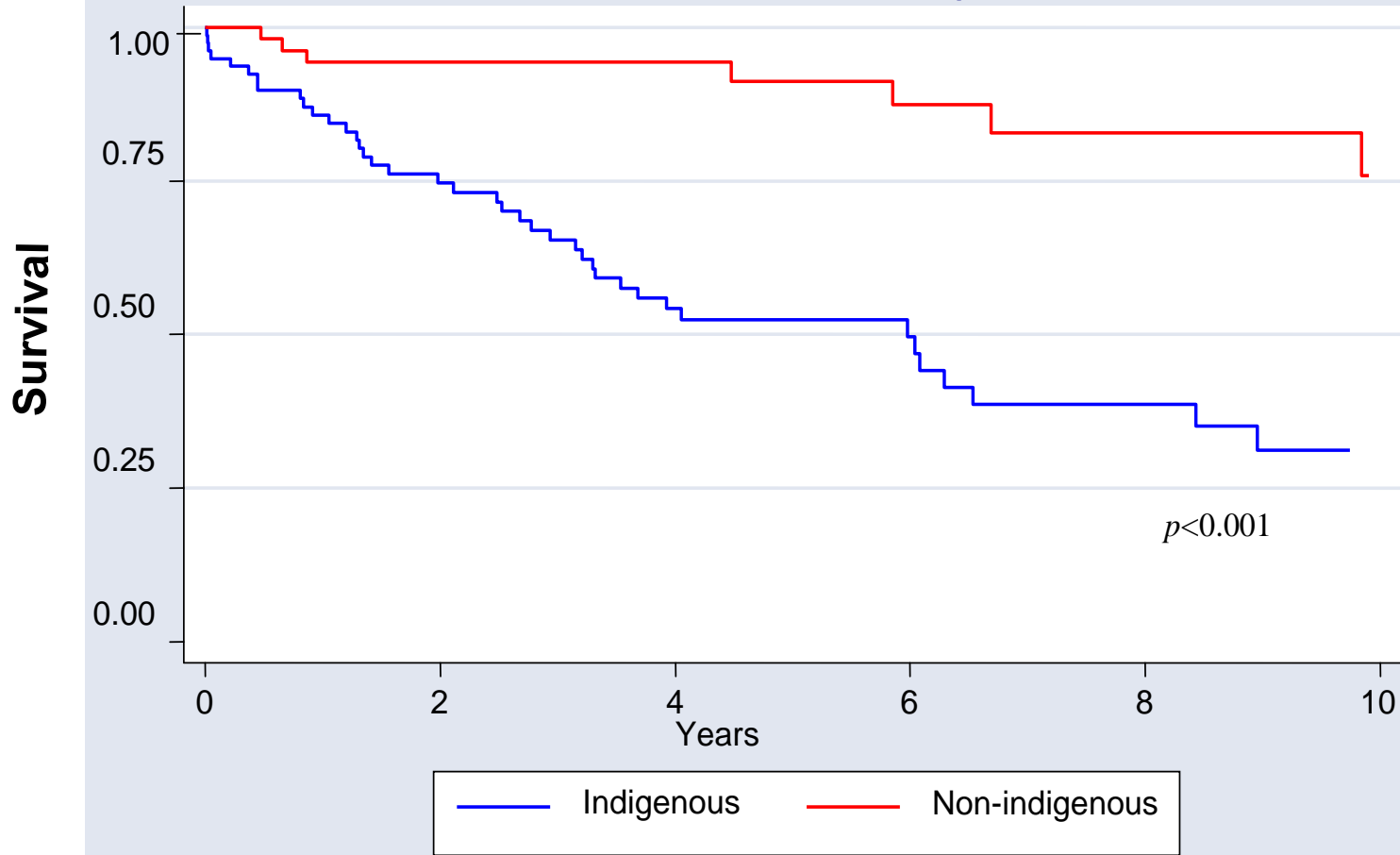


# EVOLVING PROCESSES

- Education Programme through RRT
- Database to capture every event in detail
- Rigorous psychosocial assessments pre-listing
- Remote clinic reviews
  - Transplant check lists
- Renal outreach educational programmes
- Central Australian Rural Practitioners Association (CARPA) Manual
  - guidelines
  - Clinic guidelines
- Patients education programmes
- Telehealth



## Graft survival after renal transplantation



*Rogers et al 2006*

# RETURN TO DARWIN

- Initially return to Darwin for up to 6 months
- Attend regular RDH
  - blood test monitoring
  - medical and nursing review
  - Immunosuppression & medication review – stabilisation
- Routine biopsy 4-6 months, 1 yr post transplant
- Referral to multidisciplinary team ; Dietician, Social worker/Aboriginal Liaison Officer, Pharmacist

# RETURN TO COMMUNITY

- Clinic handover re: ongoing care needs
- Weekly review (BP,WGT,TEMP,U/A,SKIN CHECK) and collection of medications ( Fax to Transplant Office 89228429)
- Bloods and immunosuppression level as per Tx Dr.
- Transplant Clinic r/v as per Tx Dr.
- Annually-
  - bone density scan
  - dermatology review
  - eye review
  - dental review
  - Well women's/men's check up
  - Fluvax / Pneumovax PRN
  - Faecal FOB ( Colonoscopy as required)

# REMOTE CLINIC REVIEW CHECKLIST

ROYAL DARWIN HOSPITAL

Department of Renal Medicine

Transplant Outpatient Record

FAX TO RENAL TRANSPLANT OFFICE 8922 8429

Date								
Weight								
Temperature								
Blood Pressure								
BGL								
U/A								
Meds given								
Pathology attended (Date)								
<b>Questions to ask your patient</b>								
Any nausea, vomiting or diarrhoea?								
Any cough or flu like symptoms?								
Any fevers?								
Any changes in urine production?								
Any pain over transplant site?								
Any side effects from medications?								
Any skin sores?								
Any other concerns?								

Name.....  
 H.R.N.....  
 DOB.....

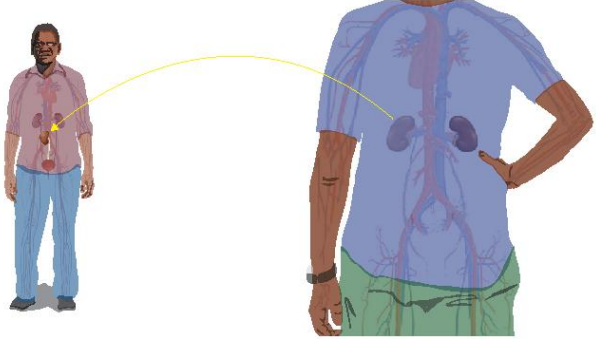
Transplant Date:.....  
 Height.....

Address.....  
 .....  
 Phone.....

# EDUCATIONAL RESOURCES


## Kidney Stories

### Kidney Transplant Story



The diagram shows a person's torso with the kidneys highlighted in purple. A yellow arrow points from the right kidney to a smaller kidney icon on a separate figure of a person, illustrating the transplant process.

Northern Territory Renal Services > Transplant > Book One > Pre Transplant > Kidney Transplant Stories



## Kidney Stories

### Kidney Transplant Story Tests Required for Kidney Transplant



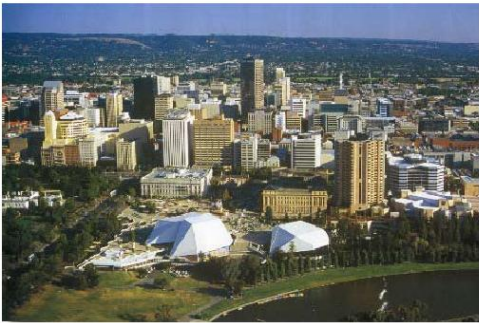
The photograph shows the exterior of a large hospital building under a clear blue sky. A blue sign in the foreground reads "Welcome to ROYAL DARWIN HOSPITAL" and "MAIN ENTRY" with an arrow pointing left.

Northern Territory Renal Services > Transplant > Book Two > Work-up Tests




## Kidney Stories

### Kidney Transplant Story Surgery in Adelaide



The aerial photograph shows the city of Adelaide, South Australia, with its distinctive skyline and the Adelaide Oval stadium in the foreground.

Northern Territory Renal Services > Transplant > Book Three > Surgery in Adelaide



## Kidney Stories

### Kidney Transplant Story Life After Kidney Transplant



The photograph shows two people walking on a dirt path through a field. On the right, a diagram of a person's torso shows a kidney transplant in the lower abdominal area, highlighted with a yellow circle and arrow.

Northern Territory Renal Services > Transplant > Book Four > Life After Kidney Transplant



# CONTACT DETAILS

- **Kerry Dole – Renal Transplant CNC**  
Tel:89228395
- **Narissa Andrew – RN**  
Tel:89228272
- **Email : [RenalTransplantNurse.THS@nt.gov.au](mailto:RenalTransplantNurse.THS@nt.gov.au)**
  
- **Renal Outpatient Registrar**  
Tel: via RDH switchboard 89228888
- **Dr. W. Majoni – Renal Consultant**  
Tel: via RDH switchboard 89228888

# ANTICIPATED OUTCOMES

- Established seamless communication lines between primary care and transplant services
- Increase patient awareness and confidence to report any problems on time
- Initiate treatment in the communities to avoid delays if any problems arise
- Embrace transplantation as part of the integrated care system for managing end stage renal disease
- Monitor progress and outcomes
- Improve outcomes.

# THANK YOU!! QUESTIONS??

“Reports that say that something hasn't happened are always interesting to me, because as we know, there are known knowns; there are things we know we know. We also know there are known unknowns; that is to say we know there are some things we do not know. But there are also unknown unknowns -- the ones we don't know we don't know.”

**US Defence Secretary Donald Rumsfeld (2001 to 2006) Memorable Quotes**